



**What is All The Fuss About?
Nonprofit Organizations
Community Development
Topics of Interest**

**Elizabeth B. Bolton
Professor of Community
Development**

Topics of Interest Related to Community Development

- **Nonprofit Organizations**
- **Workforce Development Boards/Programs**
- **Volunteer Management System**
- **Leadership Education**
- **JobStart**



FYC 4409



- **Student Outcomes**
- **Student Reactions After the Fact**
- **Content**
- **Instructional Delivery**
- **Recruitment Strategies**

Nonprofit Organizations: Governance

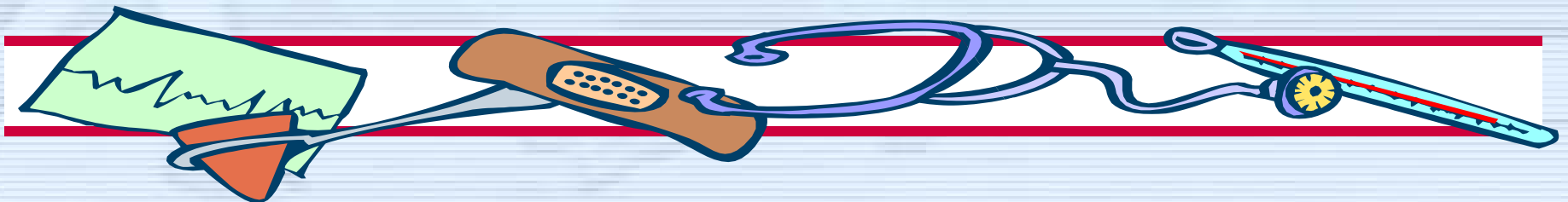


- **What Are the Major Governance Issues/Problems of NPOs in Alachua County?**
- **From Where Do the Board of Directors Come? (And Why Is This Important?)**
- **Board Assessment**
- **Board Relationship With CEO**
- **Consistency With Original Mission – How Changed**
- **The CEO's Work Within The Organization -- Comparisons**

Nonprofit Organizations: Sub-Sectors / Fields



- Health
- Education
- Religious
- Cultural
- Welfare
- Arts, Culture, Recreation, Environment



Trends and Perspectives



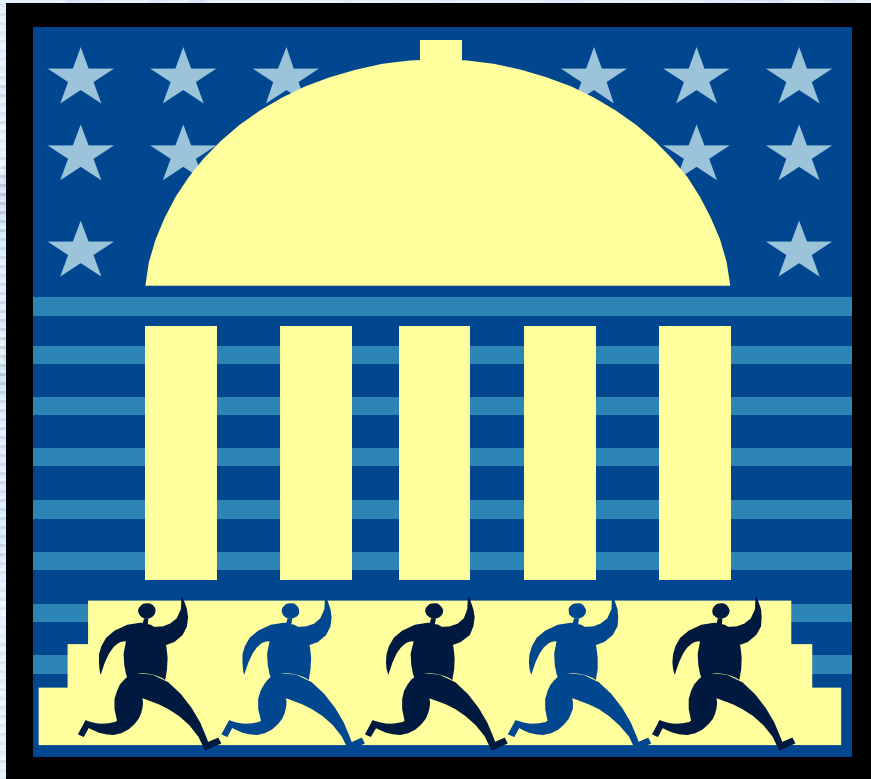
- **Prevalence/Prominence Within a Region/Area**
- **Trends Within a Sub-sector, E.G. Growth, for Profit**
- **Specific Policy Influences/Changes, E.G. TANF**
- **Extent of Services Provided, Clients Served**
- **Philosophical Foundations**
- **Comparisons Within a Region Among Organizations, Sectors**

Nonprofit Tools

- **Research Tools for the Working Professional:**
 - **NTEE**
 - **NCCES**
 - **Melissa**
 - **Electronic Hallway**
- **Use of Business Planning Methods**



Community Development and Government



- **Origins of National Policies and Initiatives**
- **Faith Based Initiatives**
- **527 Groups**
- **Federal, State and Local Tax Policies and Implications for Local Government**

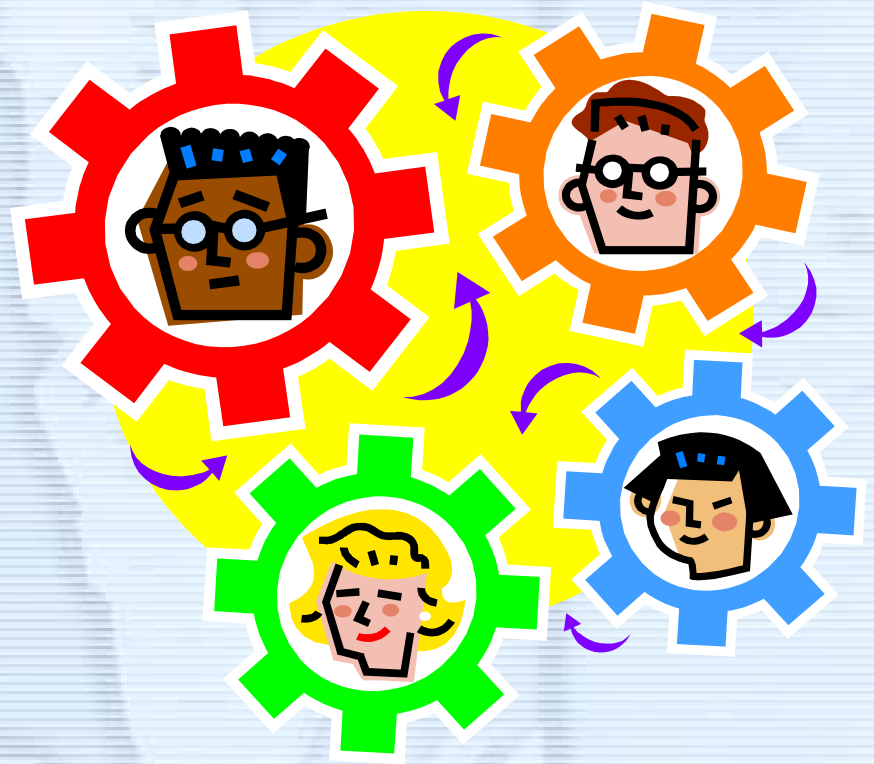
Applications



- **Assessment tool for board members**
- **Assessment Tool for Financial Operations Expertise**
- **Assessment Tool for Program/Service Recognition**
- **Fundraising Guide for Small Nonprofits**
- **Handbook for Directors**

Workforce Development

- **Survey of Programs Within a Region**
 - **Populations Served and Populations Not Served**
 - **Communication Within the Community**
 - **Connections with Other Organizations**
 - **Outcomes in Terms of Results**
 - **Educational Programs Needed (Development)**
 - **Contractors and Their Services**



JobStart

- **Validating The Components**
- **Evaluating The Outcomes**
- **Teaching Strategies Development and Assessment**
- **Agency Report Of The Curriculum**
- **Targeted groups - Variations**
- **The Georgia Connection**



Volunteer Management System



- **Recruitment**
- **Orientation**
- **Supervision**
- **Evaluation**
- **Recognition**

Volunteers and Extension

- **How Consistent Is the Utilization of Volunteers Within County Extension With the Florida Statutes?**
- **What Recognition and or Rewards Are Used in Extension Offices?**
- **What Training Do Extension Volunteers (Within a Field) Receive?**



Leadership Education

- **The Four Components and Extension – Valid?**
- **The Programs Within A Region**
- **Building Social Capital, Human Capital**
- **Competencies Needed**
- **Conflict Management As A Leadership Skill**



Local Leaders



- **Who?**
- **Characteristics**
- **Recognition**
- **Connection to
Community
Vitality**